




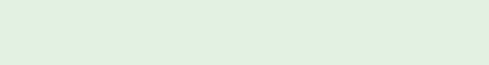
Rhetorical Analysis of K-12 Education


Frankie Montano
Dr. Penich-Thacker
English 102




“Education should not be a competition resulting in winners and losers. Education should be a competition against ignorance, and all should be encouraged to win.

–**K.A. Brill**





Through the use of logos, ethos, and pathos to convey the story of Guadalupe's and his struggles. Polletta and Mathewson's piece elevates their understanding of inequality to a new level in order to inform the state of Arizona and create change.





Rhetors

Maria Polletta & Tara
Garcia Matthewson



Context

Suspension &
Learning Loss



Purpose

Inform & Persuade



Messages

Understand Education
Inequality & Create
Change

Pathos & Audience

- Presenting Guadalupe's Life
- "The boy, who has two attention disorders and oppositional defiant disorder, often refused to sit still for circle time"
- Arizonans, School Boards, and Politics
- Inadequate Education



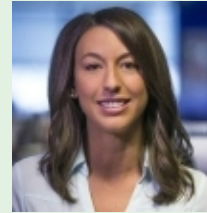
Logos

- Facts, statistics, and pieces of proof: School at Fault
- “20 districts that provided extensive demographic data revealed Black and Hispanic students frequently received a disproportionate share of these suspensions”
- Source of Educational Disparity
- Schools lack of focus to the Latino and Black communities



Ethos & Biases

- Maria Polletta: Investigative Reporter, covering inequities in education.
- Tara Garcia Matthewson: Covers inequality in K-12 education
- Credible Sources for Guadalupe's story



Impact & Effectiveness

- Guadalupe got the help he needed: Medications, tutoring, and counseling
- Every child has a narrative
- Uncover true accounts of suspensions
- New Law before suspending students should be passed



Work Cited

Mathewson, Tara. Polletta, Maria “Suspending Students for Absences, Tardies Compounds Learning Loss.” *Arizona Mirror*, 6 Dec. 2022, www.azmirror.com/2022/12/06/suspending-students-for-absences-tardies-compounds-learning-loss/.

Thank You! Any Questions?
